

みんぱく

The 6th Meeting of Signed and Spoken Language Linguistics

手話言語と音声言語に関する民博フェスタ 2017

September 23-24, 2017

National Museum of Ethnology
Auditorium, Entrance hall

国立民族学博物館 講堂 エントランスホール

SSLL2017 will be held for the promotion of sign language linguistics, and also for a better understanding of human language by comparing and analyzing signed and spoken languages. English/Japanese, ASL/English, JSL/Japanese interpretation will be provided and the presentations will be webcast on Ustream.

手話言語に関する研究をすすめると同時に、音声言語と手話言語を比較することで人間言語への理解を深めることを目的として開催いたします。USTREAMによるインターネット中継も行います。(日英同時通訳、日本語 - 日本手話通訳、英語 - アメリカ手話通訳付き)

Invited Lectures 招待講演

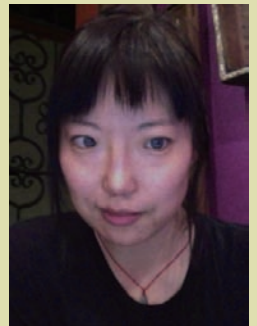
"Making Hands" and Making Words 「手を整えること」と言葉を作ること

Lynn Yong-Shi HOU (University of California, San Diego, USA)

Profile

She received her Ph.D in Linguistics at the University of Texas at Austin. Her primary research interests include the linguistics of emerging and established signed languages: particularly grammaticalization, iconicity, verb morphology and morphosyntax. She also has secondary interests in language ideologies and language socialization.

キーワード：手話の構成（文法化、象徴性、動詞形態学、形態素解析）、言語イデオロギー、言語社会化



Flemish Sign Language Lexicography: Past, Present and Future フラマン手話の辞書編纂——過去・現在・未来

Mieke VAN HERREWEGHE (University of Ghent, Belgium)

Profile

She has done and is doing research on linguistic analyses of Flemish Sign Language (VGT or Vlaamse Gebarentaal) and the acquisition of English as a Foreign Language (EFL) and on historical aspects of English. She very broadly looks at the language from grammatical, lexicographical and sociolinguistic perspectives. She is also a Flemish Sign Language interpreter and was one of the founding members of the Flemish Sign Language Centre.

キーワード：フラマン手話の言語学的分析、外国語としての英語習得、英語の歴史的側面、文法、辞書学、社会言語学

Registration 参加受付

To register for the conference, fill out the form at the following URL or QR code.

下記 URL、または右の QR コードよりお申し込みください。

<https://goo.gl/forms/VU6M48G4cUTAfoty1>



国立民族学博物館
National Museum of Ethnology



Supported by 日本 THE NIPPON
財団 FOUNDATION

SSLL2017 Program プログラム

Saturday, September 23, 2017		
Auditorium		Entrance hall
9:00- 9:20	Registration Counter Open	
9:20- 9:25	b1 Opening Remarks	KIKUSAWA Ritsuko (National Museum of Ethnology, Japan / The Graduate University for Advanced Studies, Japan)
9:25- 9:30	b2 Greetings	YOSHIDA Kenji (Director-General, National Museum of Ethnology, Japan)
9:30- 9:35	b3 Business Announcements	SAGARA Keiko (National Museum of Ethnology, Japan)
9:40-10:50	01 Invited Lecture 1: "Making Hands" and Making Words	Lynn Yong-Shi HOU (University of California, San Diego, USA)
10:50-11:10	Break	
11:10-11:50	02 Improvisational Signing: How JSL Signers Solve Word-finding Problems in Interaction	BONO Mayumi (National Institute of Informatics & SOKENDAI, Japan)
11:50-12:30	03 Metaphors of Emotion in Taiwan Sign Language	Jung-hsing CHANG (Graduate Institute of Linguistics, National Chung Cheng University, Taiwan)
12:30-13:30	Lunch	
13:30-14:10	04 Speaker (Un)certainly in Sign Languages	Elisabeth ENGBERG-PEDERSEN (University of Copenhagen, Denmark)
14:10-14:50	05 Simultaneous vs. Sequential Compounds in LIS (Italian Sign Language): A Perceptual Experiment	Mirko SANTORO (Institut Jean-Nicod, École Normale Supérieure, France)
14:50-15:50	Exhibition hall viewing & Break	
15:50-16:30	07 Languages in Contact: The Lexicon and Morphology of Signed Languages in Contact with Spoken Languages	Benjamin GIBSON (Temple University, USA)
16:30-17:10	08 Imagistic Structure and List Buys	Paul G. DUDIS (Gallaudet University, USA)
17:10-17:15	b4 Business Announcements	SAGARA Keiko (National Museum of Ethnology, Japan)
17:15-18:15	Poster Session (Entrance Hall)	
18:15-20:15	Reception (Entrance Hall)	

Sunday, September 24, 2017		
Auditorium		Entrance hall
9:15- 9:35	Registration Counter Open	
9:35- 9:40	b5 Business Announcements	SAGARA Keiko (National Museum of Ethnology, Japan)
9:40-10:50	09 Invited Lecture 2: Flemish Sign Language Lexicography: Past, Present and Future	Myriam Vermeerbergen (KU Leuven, Belgium)
10:50-11:10	Break	
11:10-11:50	10 Relative Clauses in Japanese Sign Language	Mark PENNER, YANO Uiko and TERASAWA Hideya (Japan Deaf Evangel Mission, Japan)
11:50-12:30	11 LSF Relative Clauses in a Typological Perspective	Charlotte HAUSER (Université Paris Diderot (LLF), Institut Jean Nicod (ENS-CNRS-EHESS), France)
12:30-13:30	Lunch	
13:30-14:10	12 Low Referentiality in LIS (Italian Sign Language) and LSF (French Sign Language)	Jeremy KUHN*, Carlo GERACI** and Lara MANTOVAN** (Institut Jean-Nicod, École Normale Supérieure, France*, University of Milano-Bicocca, Italy**)
14:10-14:50	13 Does Clause-final Finger Pointing Refer to a Null Topic in JSL?	UCHIBORI Asako* and IMANISHI Yusuke** (Nihon University*, Kwansai Gakuin University, Japan**)
14:50-15:30	14 Comparing Word Orders in Simple Transitive Clauses in Three Asian Sign Languages	Felix SZE (The Chinese University of Hong Kong)
15:30-16:00	Break	
16:00-16:40	15 Testing Early Vocabulary Knowledge of Cantonese and Hong Kong Sign Language of Young Children	Felix SZE, Cheryl TONG and David LAM (The Chinese University of Hong Kong)
16:40-17:20	16 Constructing a Profile of Successful L2 Signer-Hearing Parents of Deaf Children	Deborah CHEN PICHLER (Gallaudet University, USA)
17:20-17:30	b6 Closing Remarks	KIKUSAWA Ritsuko (National Museum of Ethnology, Japan / The Graduate University for Advanced Studies, Japan)

* Invited presentations will be 50 minutes presentation followed by a 20 minute question and answer period. Other presentations will be 30 minutes presentation followed by a 10 minute questions and answer period.

*招待講演は50分 + 20分質疑応答。研究発表は30分 + 質疑応答10分。

Poster session		
Poster1	Facial Expressions and Speech Acts in Non-signers	Jeremy KUHN* and Emmanuel CHEMLA** (*Institut Jean-Nicod, École Normale Supérieure, **Laboratoire de Sciences Cognitives et Psycholinguistique (CNRS, EHESS, ENS))
Poster2	Merging Signed and Spoken Language Documentation	Samantha RARRICK (University of Hawai'i at Manoa, USA)
Poster3	A Feature-Geometric Approach	Donovan GROSE (Hang Seng Management College, Hong Kong)

○ Check the latest information, abstracts and access information on the website of the SSLL2017.

最新の情報、日本語版プログラム、要旨など最新情報は SSLL2017Web ページでご確認ください。 <http://www.r.minpaku.ac.jp/ritsuko/ssll2017/index.html>



国立民族学博物館 National Museum of Ethnology

●開館時間…………… 10:00 ~ 17:00 (入館は 16:30 まで) ●休館日…………… 水曜日 (水曜日が祝日の場合は、翌日が休館)

●観覧料…………… 一般 420 円 / 高校・大学生 250 円 / 中学生以下 無料
※観覧料割引についてはホームページでご確認ください。

交通のご案内

- 大阪モノレール… 「万博記念公園駅」、「公園東口駅」徒歩約 15 分
- バス…………… 阪急茨木市駅・JR 茨木駅から「万博記念公園駅(エキスポシティ前)」「日本庭園前」下車徒歩約 13 分
- 乗用車…………… 万博記念公園「日本庭園前駐車場」(有料)から徒歩約 5 分
※「日本庭園前ゲート」横にある当館専用通行口をお通りにください。

※高校・大学生・一般の方は自然文化園(中央口、西口、北口)窓口で、当館の観覧券をお買い求めください。同園内を無料で通行できます。 ※小・中学生が自然文化園(有料区域)を通行される場合は、自然文化園(中央口、西口、北口)有人窓口で、みんぱくへ行くことを申し出いただき、無料通行券をお受け取りください。 ※東口からは、自然文化園(有料区域)を通行せずに来館できます。 ※東口または日本庭園前駐車場から来館し、自然文化園(有料区域)を通行してお帰りの場合は、同園入園料が必要です。

[大阪・万博記念公園]
〒565-8511
大阪府吹田市千里万博公園10番1号
研究協力課共同利用係
Tel:06-6876-2151(代) Fax:06-6878-8479
www.minpaku.ac.jp/

